



# Mask Fit Tester

AccuFIT 9000<sup>®</sup> PRO



## Respirator Types:

- N95
- N99
- P100
- FFP1
- FFP2
- FFP3
- Full&Half-Face Elastomerics

Measure leakage ratio of dust concentration quantitatively in and out of mask.  
To select fitted mask and to check leakage

### Features

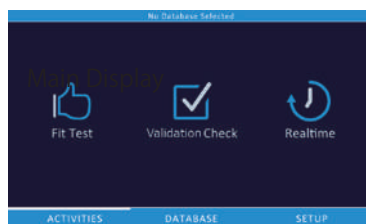
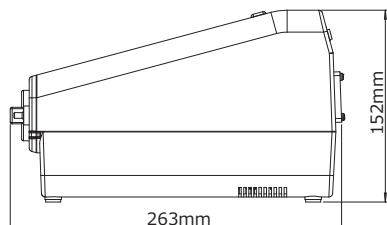
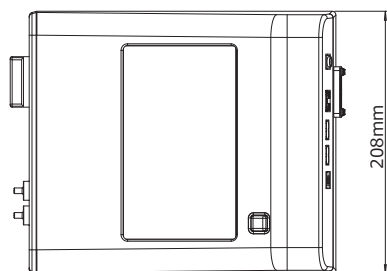
- 7" Color Touch Screen
- OSHA (Occupational Safety and Health Administration) & CSA (Canadian Standards Association) Protocol Compliant
- Stand Alone or PC Operation
- 3 USB Ports + 1 Ethernet Wi-Fi Enabled
- (CNC) Technology
- Control up to 4 Units with Single Computer
- 6 Language Options

## Specifications

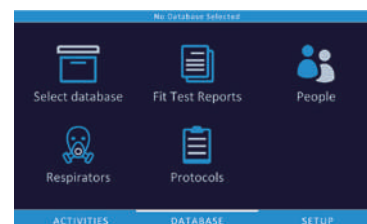
Product Name	Mask Fit Tester AccuFIT 9000®PRO
Model #	3000-A1
Concentration Range	0~100,000 particles/cm <sup>3</sup>
Particle Size Range	0.015~1 μm
Flow Rate	Sample: 100 cm <sup>3</sup> /min, Total: 700 cm <sup>3</sup> /min
Temperature Range	Operation: 15~35°C
Fit Factor Measurement (※2)	Direct measurement of fit factor (Cout/Cin)
Alcohol	99.5%+ reagent grade Isopropyl (need to be prepared by user)
Display	7" color Touch Screen
Inlet Ports	Ambient (left, blue) Sample (right, silver)
Flow Control	Sensor control
Medical Evaluation Software	Integrated
Languages	English, French, Spanish, Portuguese, Chinese, Japanese
AC Adapter	two blades without ground
Interface	USB (Port 3 : Device 1, Host 2), Ethernet (Port 1), Wi-Fi
PC Application	Control 4 units Simultaneously with Single Computer
Software	Windows 7, 8, 10, Microsoft.Net version 3.5
Reporting Format	Windows Excel
Power Supply	AC Adapter (AC100-240V 50/60Hz)
Size	208(W)×152(H)×263 (D) mm
Weight	3.1 kg
Accessories	AC Adapter, Carrying Case, 99.5% Reagent Grade Alcohol, Touch Pen, Testing Software, USB Cable, Operation and Service Manual, Factory Calibration Certificate
Sold Separately	N95 Probe Kit (Probe and Push Nut 100 each), Probe Insertion Tool

(※) Fit Factor = Number of Particle outside of mask / Number of Particle inside mask

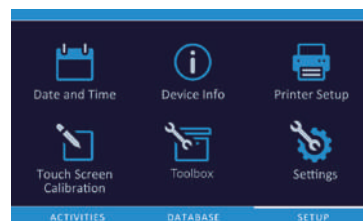
(※) The AccuFIT9000 PRO is not waterproof. Please keep it away from water and other liquids.



Main Display



Data Base Setting



Setting



**Kanomax Japan Inc.**

2-1 Shimizu Suita-Shi  
Osaka, Japan 565-0805  
TEL: +81 6 6877 0183  
FAX: +81 6 6877 5570  
TEL: (03) 5733-6023

●Distributor



**華環實業有限公司**

**Xinlinya Industry Co., LTD**

TEL:02-8665-9799

FAX:02-8665-3799

E-mail: ivanlin.tony@msa.hinet.net

xinlinya@xinlinya.com.tw

23146 新北市新店區中正路 57-2 號 7 樓